

Example of commonly available hand held cutting blade:

X-ACTO Knife #1



X-ACTO Knife Set

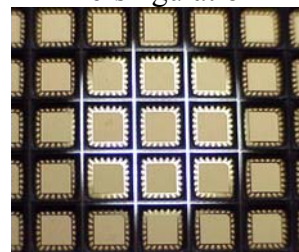


AH-QFN and AH-CAP are partially pre-sawn:

View from Top



Pre-singulation



View from Bottom



Cut through 2~4mil (50~100 μ m)
substrate material to fully singulate.

Suggestions for hand singulation:

- Cut from top side
- Use cutting tool of your choice
- Burr around perimeter is allowable
- Glass fibers in substrate is allowable