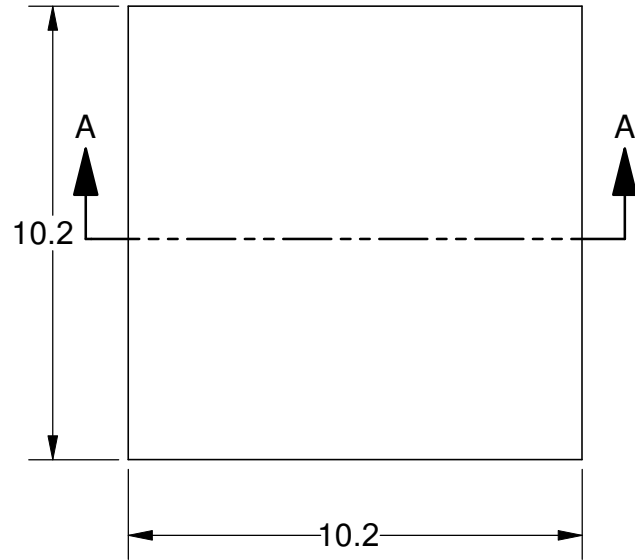
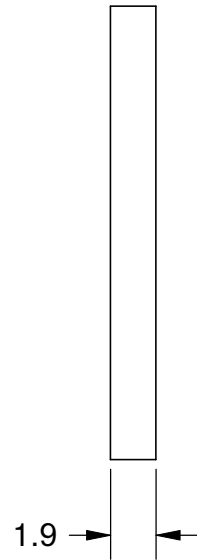


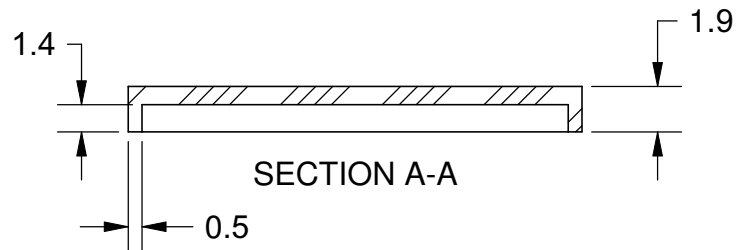
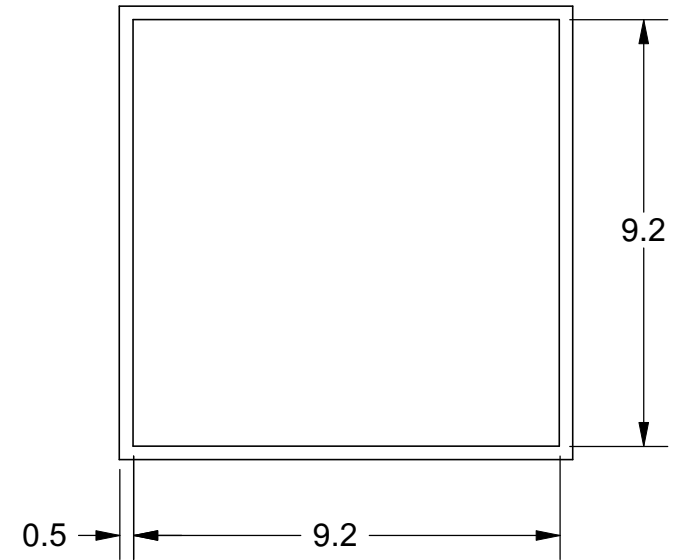
TOP VIEW



SIDE VIEW


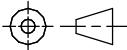


BOTTOM VIEW



Notes: (Unless Otherwise Specified).

- 1) MATERIAL:
  - A) LCP - LIQUID CRYSTAL POLYMER.
  - B) PREFORM NONE.
- 2) LID ATTACH:
  - A) REMOVABLE: USE KAPTON TAPE OF EQUIVALENT.
  - B) PERMANENT: USE EPOXY PER CUSTOMER CHOICE.
- 3) STORAGE LIFE: NO LIMIT @ 25 °C.
- 4) COLOR: BLACK.
- 5) DIMENSIONS: mm.

TOLERANCE UNLESS NOTED		APPROVALS		DATE		 <b>Mirror</b> Semiconductor™							
X.XX	+/- 0.13	DRAWN J. Hines		7/31/2011						TITLE 10.2 X10.2 mm DOME LID L-CAP10.2T1.9-BLACK			
X.XXX	+/- 0.06												
X.XXXX	+/- 0.03												
ANGLES +/- 0.5°		ENG				SCALE 6:1    SIZE A    DRAWING NO. 297480    REV A							
ALL DIMENSIONS IN		MFG											
<input checked="" type="checkbox"/> INCHES <input type="checkbox"/> MILLIMETERS		QA											
THIRD ANGLE PROJECTION 		CUST				DO NOT SCALE DRAWING    SHEET 1 OF 1							
		REVISED											