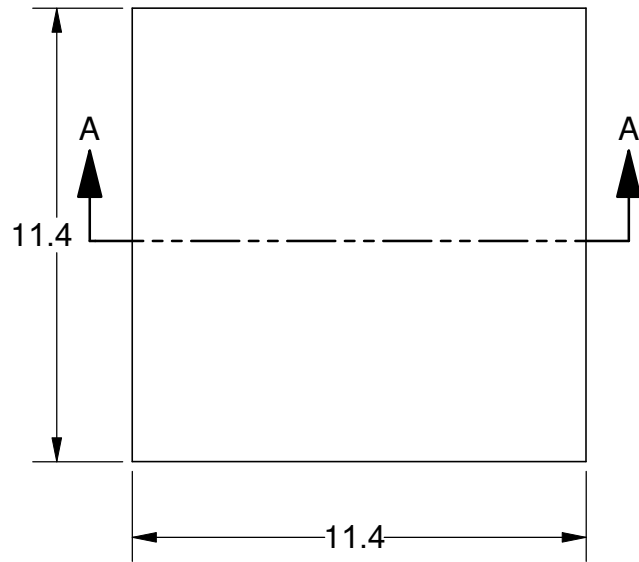
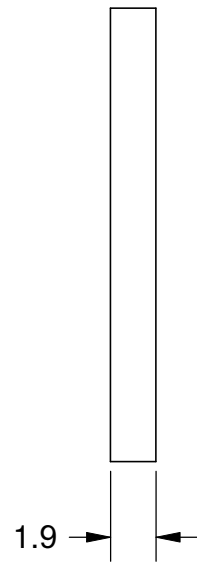


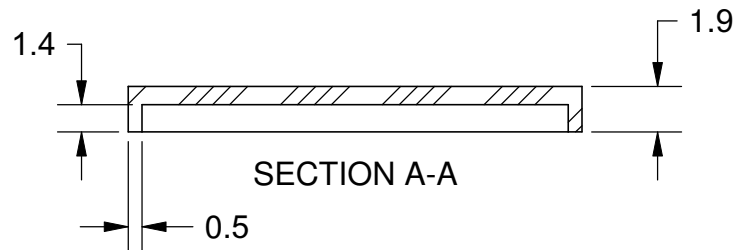
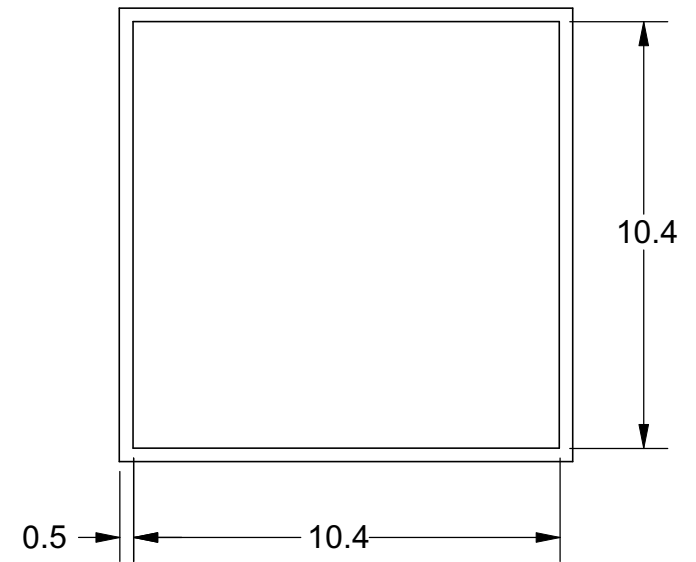
TOP VIEW



SIDE VIEW


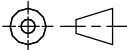


BOTTOM VIEW



Notes: (Unless Otherwise Specified).

- 1) MATERIAL:
 - A) LCP - LIQUID CRYSTAL POLYMER.
 - B) PREFORM NONE.
- 2) LID ATTACH:
 - A) REMOVABLE: USE KAPTON TAPE OF EQUIVALENT.
 - B) PERMANENT: USE EPOXY PER CUSTOMER CHOICE.
- 3) STORAGE LIFE: NO LIMIT @ 25 °C.
- 4) COLOR: BLACK.
- 5) DIMENSIONS: mm.

TOLERANCE UNLESS NOTED		APPROVALS		DATE		 Mirror Semiconductor™							
X.XX	+/- 0.13	DRAWN J. Hines		7/31/2011						TITLE 11.4 X 11.4 mm DOME LID L-CAP11.4T1.9-BLACK			
X.XXX	+/- 0.06												
X.XXXX	+/- 0.03	ENG				SCALE		SIZE		DRAWING NO.		REV	
ANGLES +/- 0.5°		MFG				6:1		A		295480		A	
ALL DIMENSIONS IN		THIRD ANGLE PROJECTION		QA									
<input checked="" type="checkbox"/> INCHES <input type="checkbox"/> MILLIMETERS				CUST									
				REVISED									
								DO NOT SCALE DRAWING				SHEET 1 OF 1	