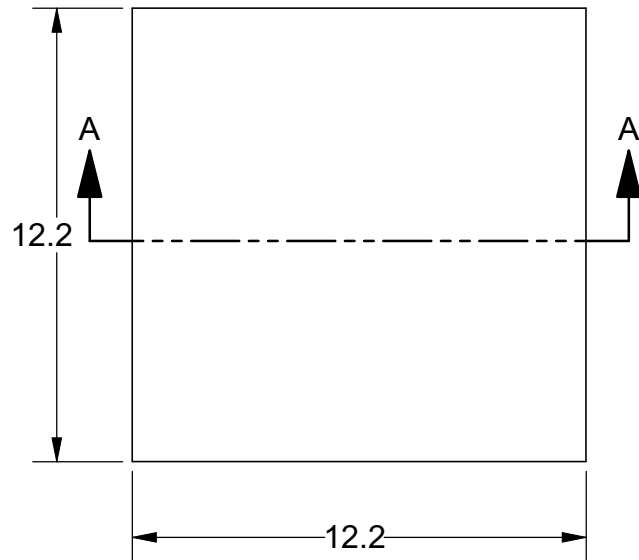
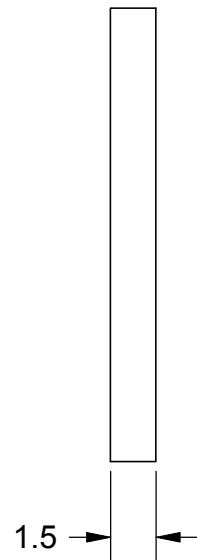


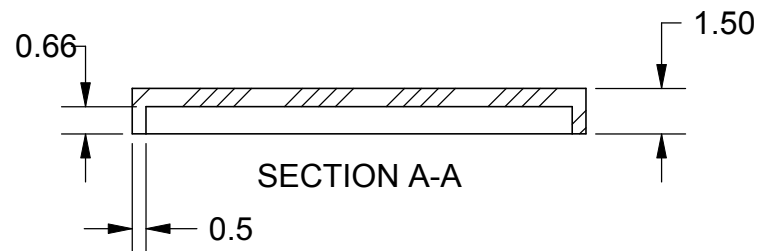
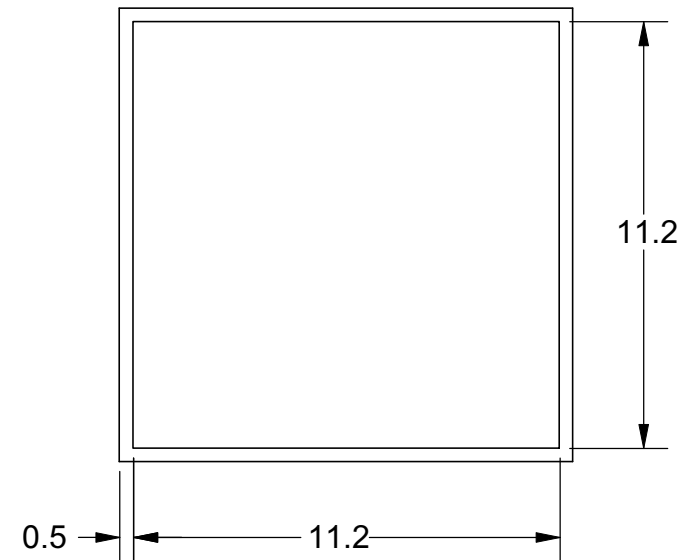
TOP VIEW



SIDE VIEW


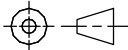


BOTTOM VIEW



Notes: (Unless Otherwise Specified).

- 1) MATERIAL:
 - A) LCP - LIQUID CRYSTAL POLYMER.
 - B) PREFORM NONE.
- 2) LID ATTACH:
 - A) REMOVABLE: USE KAPTON TAPE OF EQUIVALENT.
 - B) PERMANENT: USE EPOXY PER CUSTOMER CHOICE.
- 3) STORAGE LIFE: NO LIMIT @ 25 °C.
- 4) COLOR: BLACK.
- 5) DIMENSIONS: mm.

TOLERANCE UNLESS NOTED		APPROVALS		DATE	 Mirror Semiconductor™			
X.X	+/- 0.13	DRAWN J. Hines		6/1/2018				
X.XX	+/- 0.06	ENG						
X.XXX	+/- 0.03	MFG			TITLE 12.2 X 12.2 mm DOME LID L-CAP12.2T1.5-BLACK			
ANGLES	+/- 0.5°	THIRD ANGLE PROJECTION			SCALE 6:1	SIZE A	DRAWING NO. 291480	REV A
ALL DIMENSIONS IN MILLIMETERS				REVISED	DO NOT SCALE DRAWING			SHEET 1 OF 1