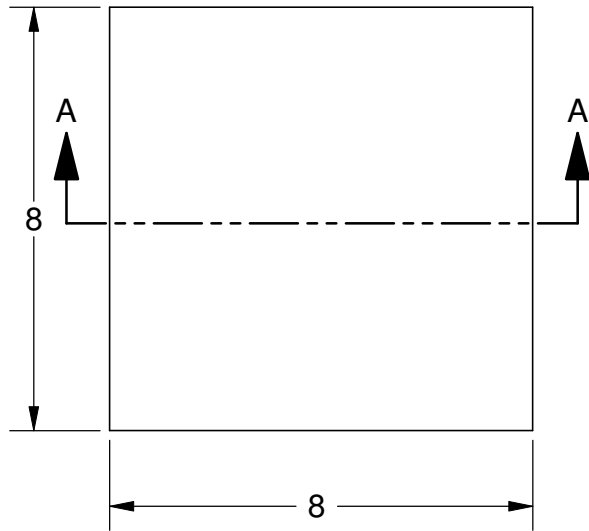
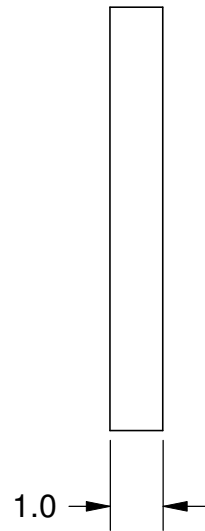


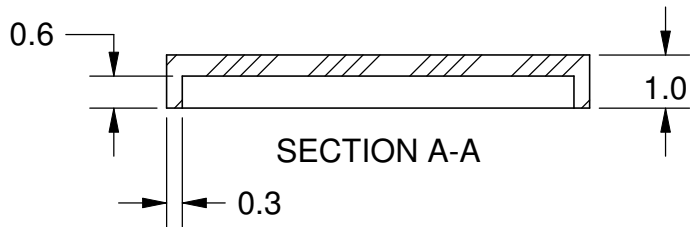
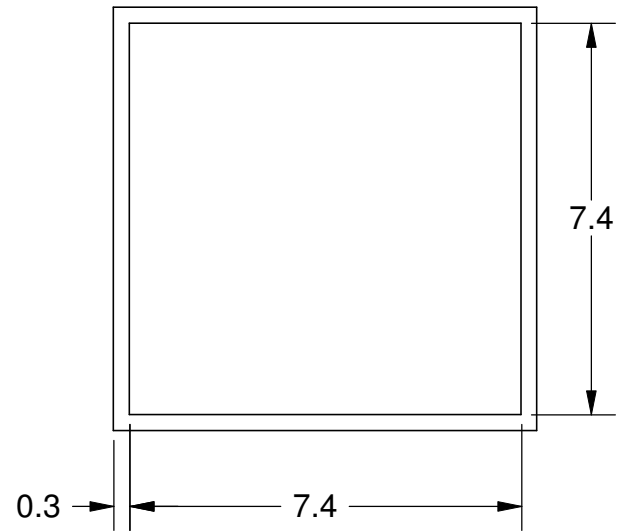
TOP VIEW



SIDE VIEW




BOTTOM VIEW



Notes: (Unless Otherwise Specified).

- 1) MATERIAL:
 - A) LCP - LIQUID CRYSTAL POLYMER.
 - B) PREFORM: NONE.
- 2) LID ATTACH:
 - A) REMOVABLE: USE KAPTON TAPE OF EQUIVALENT.
 - B) PERMANENT: USE EPOXY PER CUSTOMER CHOICE.
- 3) STORAGE LIFE: NO LIMIT @ 25 °C.
- 4) COLOR: BLACK.
- 5) DIMENSIONS: mm.

TOLERANCE UNLESS NOTED		APPROVALS		DATE		 Mirror Semiconductor™							
X.XX	+/- 0.13	DRAWN J. Hines		7/31/2011						TITLE 8X8 mm DOME LID L-CAP8			
X.XXX	+/- 0.06	ENG											
X.XXXX	+/- 0.03	MFG				SCALE		SIZE		DRAWING NO.		REV	
ANGLES +/- 0.5°		QA				7:1		A		208180		A	
ALL DIMENSIONS IN		CUST											
<input checked="" type="checkbox"/> INCHES <input type="checkbox"/> MILLIMETERS		REVISED											
THIRD ANGLE PROJECTION													
