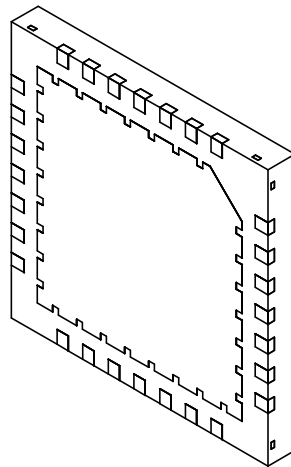

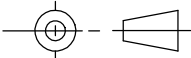


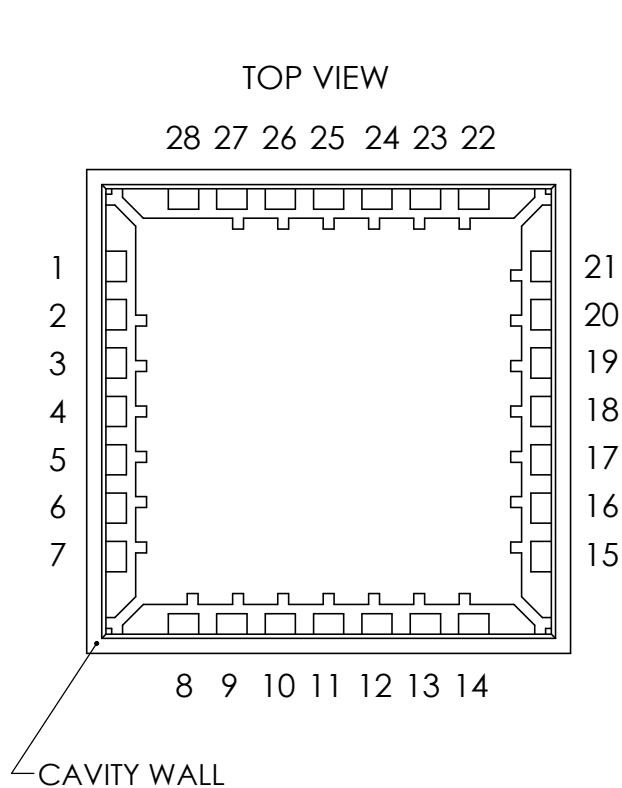
ISOMETRIC VIEW OF CAVITY SIDE



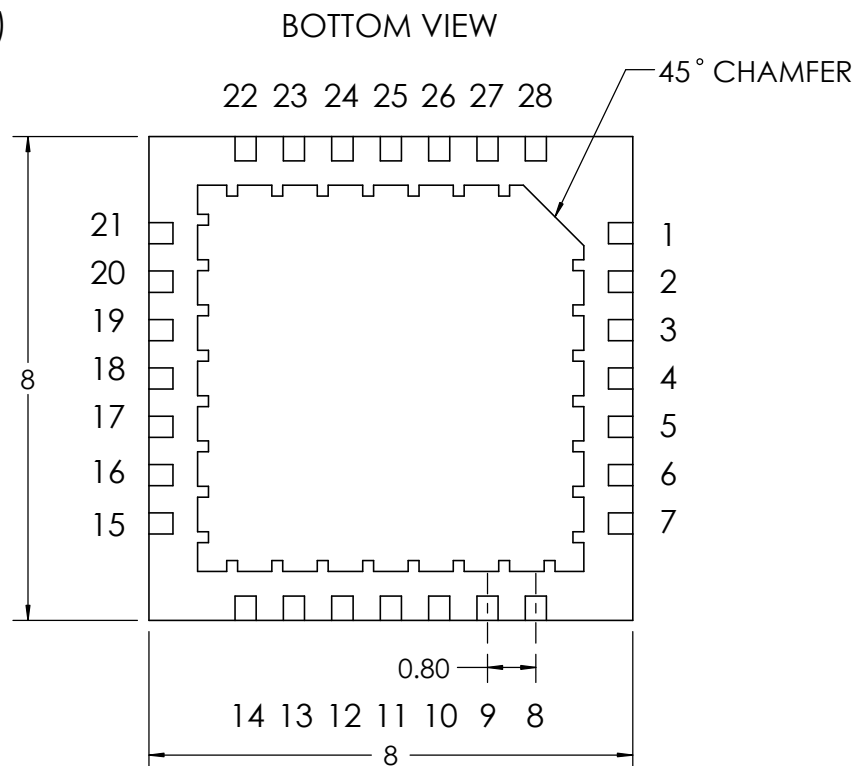
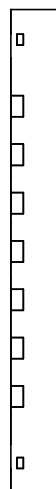
ISOMETRIC VIEW OF PCB SIDE

- Notes: (Unless Otherwise Specified)
- 1) BODY; PLASTIC, SEMICONDUCTOR GRADE
  - 2) LEAD FRAME: COPPER, C-194F/H
  - 3) LEAD FRAME PLATING: Ni, Pd, Au
  - 4) FRAME THICKNESS: 0.203mm
  - 5) DIE PAD: 6.4 X 6.4mm
  - 6) JEDEC OUTLINE: MO-220

TOLERANCES UNLESS NOTED		APPROVALS		DATE	 www.MirrorSemi.com
X.X	± 0.05	DRAWN	JMG	03/27/13	
X.XX	± 0.01	CHECKED			
X.XXX	± 0.005	ENG APPR.			
X.XXXX	± 0.0005	MFG APPR.			
ALL DIMENSIONS IN		Q.A.			SCALE    SIZE    DWG. NO.    REV <b>8:1    A    482970    A</b> M-QFN28W.8-8MM-G7
<input type="checkbox"/> INCHES <input checked="" type="checkbox"/> MILLIMETERS		CUST.			
THIRD ANGLE PROJECTION 		REVISED			DO NOT SCALE DRAWING



SIDE VIEW  
(BEFORE LID ATTACH)



**Mirror**  
Semiconductor™

www.MirrorSemi.com

TITLE:

28-LEAD 8mm P=0.80mm  
QFN CAVITY PACKAGE  
LEAD NUMBERING

SCALE

**8:1**

SIZE

**A**

DWG. NO.

482970  
M-QFN28W.8-8MM-G7

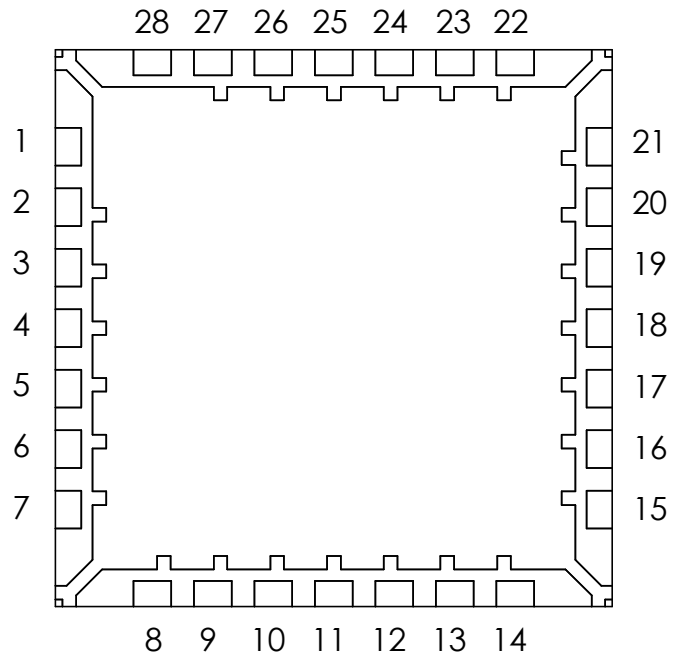
REV

**A**

DO NOT SCALE DRAWING

SHEET 2 OF 4

# BOND DIAGRAM



**Mirror**  
Semiconductor™

www.MirrorSemi.com

TITLE:

28-LEAD 8mm P=0.80mm  
QFN CAVITY PACKAGE  
BOND DIAGRAM

SCALE  
**10:1**

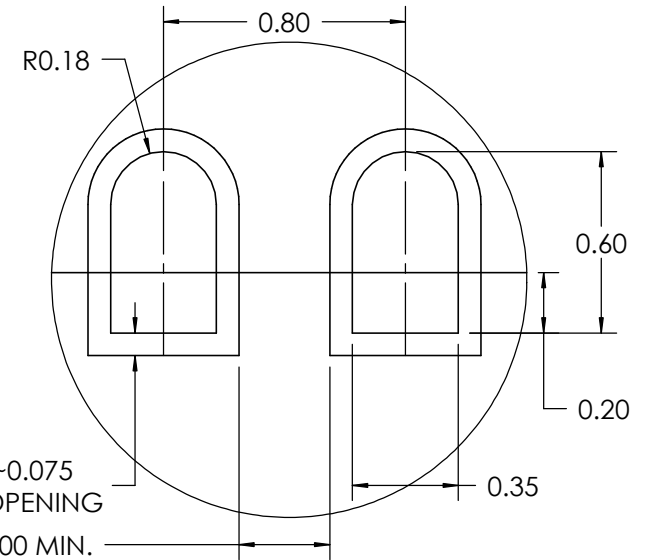
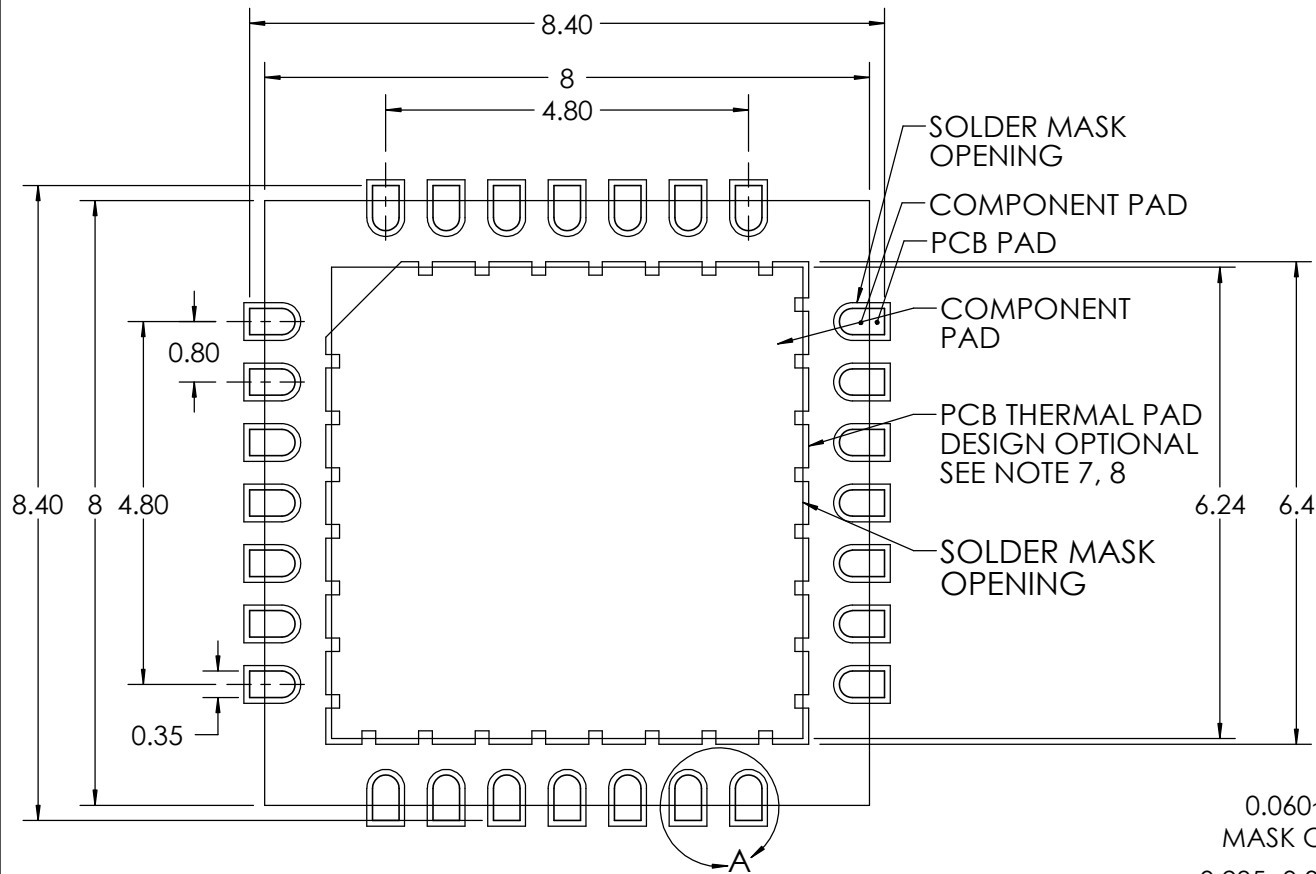
SIZE  
**A**

DWG. NO.  
482970  
M-QFN28W.8-8MM-G7

REV  
**A**

DO NOT SCALE DRAWING

SHEET 3 OF 4



DETAIL A  
SCALE 40 : 1

Notes: (Unless Otherwise Specified).

1. DIMENSIONS ARE PRESENTED ONLY AS A GUIDELINE. DESIGNERS SHOULD USE THEIR OWN KNOWLEDGE BASE WHEN DESIGNING THE PCB.
2. SURROUND EACH SIDE OF I/O PERIMETER PADS WITH 0.060~0.075 mm (2.4~3.0mils) NSMD SOLDER MASK OPENING. OPTIONALLY OK TO USE RECTANGLE (NSMD) MASK OPENING AROUND I/O PADS.
3. ROUNDED PCB LAND PADS REDUCE SOLDER BRIDGING. PAD CHAMFER ANGLE MAY VARY.
4. PCB LANDS SHOULD BE 0.2mm LONGER THAN THE PACKAGE I/O PADS.
5. THE WIDTH OF PERIMETER PCB PADS SHOULD MATCH (1:1) THE WIDTH OF THE PACKAGE PADS.
6. REFER TO INDUSTRY REFERENCES SUCH AS IPC-SM-782 FOR PCB LAND PATTERN DESIGN.
7. THERMAL GROUND PADS MAY BE CHANGED TO SUITE REQUIREMENTS OF THE DESIGNER.
  - A. MAKE COPPER THERMAL PAD AS LARGE AS POSSIBLE.
  - B. DRILL MULTIPLE THERMAL VIAS 0.25~0.33mm DIAMETER USING 0.8~1.2mm PITCH GRID.
  - C. PLATE THERMAL VIA BARRELS WITH 1-OUNCE COPPER (18 $\mu$ m).
  - D. TENT (COVER) THERMAL VIAS WITH SOLDER MASK 0.1mm LARGER THAN THE VIA DIAMETER.
8. STENCIL DESIGN MAY BE CHANGED TO SUITE REQUIREMENTS OF THE DESIGNER.
  - A. LASER CUT STENCIL 0.125mm (5mil) THICK. APERTURE SIZE-TO-LAND RATIO OF 1:1.
  - B. THE SOLDER PASTE OPENING IN THE THERMAL PAD AREA SHOULD BE A MATRIX ARRAY OF SMALLER APERTURES INSTEAD OF ONE LARGE APERTURE TO CONTROL PASTE AMOUNTS.
  - C. APPLY 50% TO 80% SOLDER PASTE COVERAGE IN THE PAD AREA.

**Mirror**  
Semiconductor™

www.MirrorSemi.com

TITLE: 28-LEAD 8mm P=0.80mm  
QFN CAVITY PACKAGE  
RECOMMENDED PCB  
LAYOUT

SCALE	SIZE	DWG. NO.	REV
10:1	A	482970 M-QFN28W.8-8MM-G7	A

DO NOT SCALE DRAWING

SHEET 4 OF 4