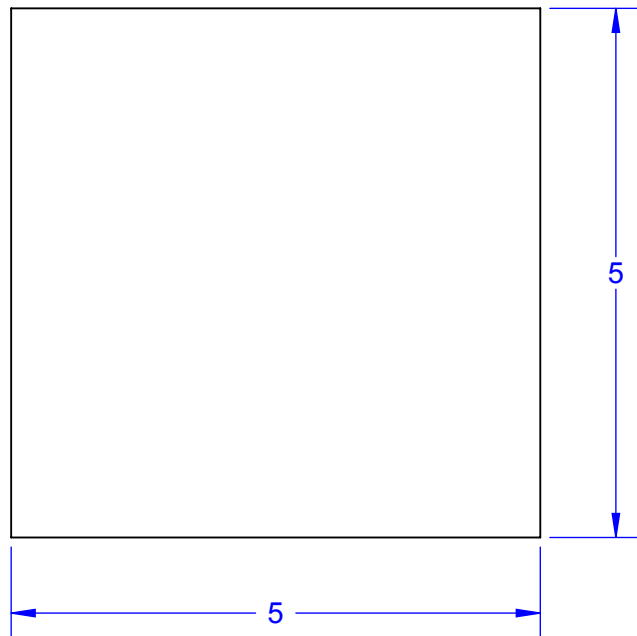
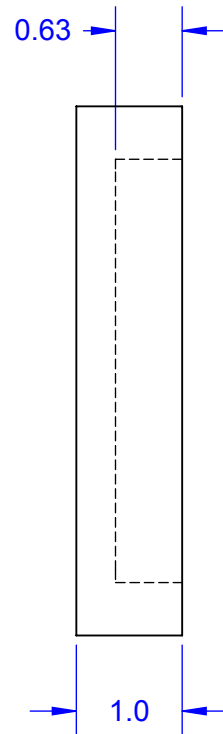


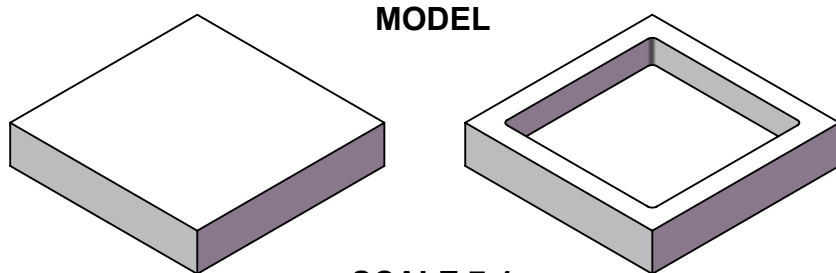
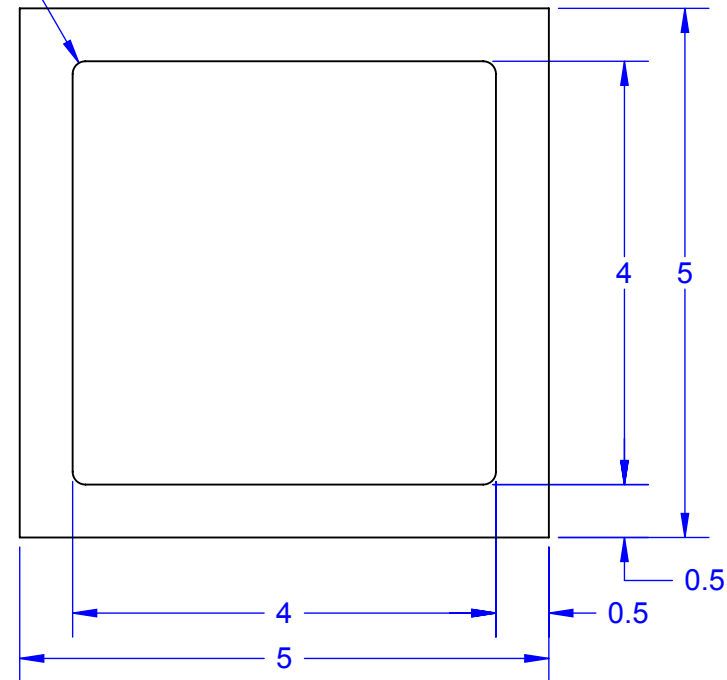
**TOP VIEW  
CLOSED SIDE**



**SIDE VIEW**



**BOTTOM VIEW  
OPEN SIDE**



**MODEL**

**SCALE 7:1**

PART NUMBER TABLE			
PART NBR	PACKAGING	QTY	DWG
C-CAP5W-WHITE	2-INCH TRAY	36	205060
C-CAP5T-WHITE	4-INCH TRAY	144	205460
C-CAP5X-WHITE	JEDEC TRAY	490	205660
C-CAP5E-WHITE	TAPE & REEL	1000	205860

Notes: (Unless Otherwise Specified).

1) MATERIAL:


A) LID: WHITE ALUMINA 96 (Al<sub>2</sub>O<sub>3</sub>)

B) PREFORM: NONE.

2) LID ATTACH: USE EPOXY PER CUSTOMER CHOICE.

3) STORAGE LIFE: NO LIMIT @ 25 °C.

4) DIMENSIONS IN mm.

APPROVALS		DATE	 TITLE C - CAP 5x5mm DOME LID			
DRAWN	T.Au	12/16/12				
ENG	M. Hart	12/16/12				
MFG			DO NOT SCALE DRAWING		SHEET 1 OF 1	
QA						
CUST						
REVISED						