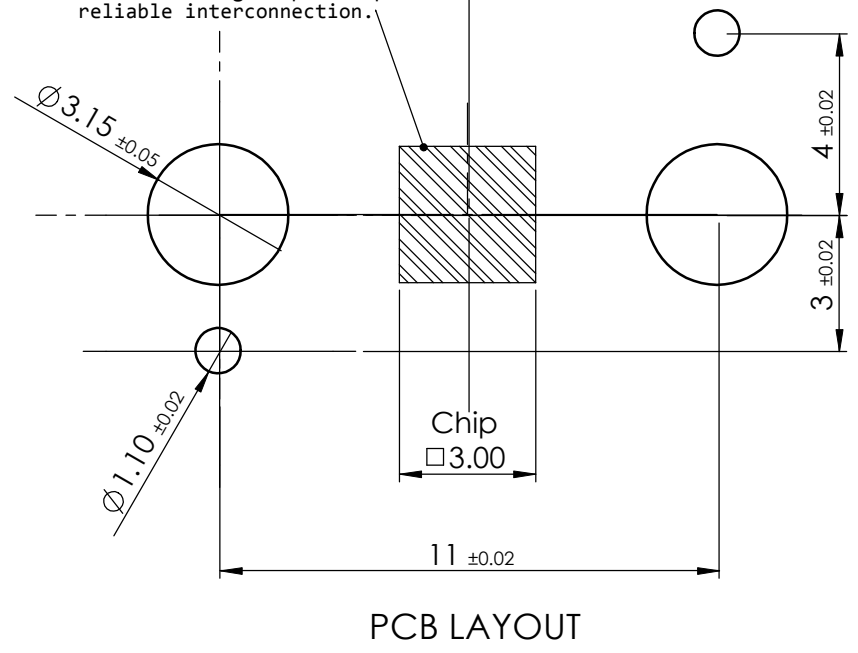


Elastomer sockets are adapted to any grid and pin configuration. The PCB pad dimensions can be taken from the chip drawing. We recommend gold plated pads for reliable interconnection.



**IMPORTANT NOTE**  
PCB layout is symmetrical as drawn and does not emulate the socket dimensions.

**CAUTION :**  
SOCKET DIMENSIONS ONLY  
DO NOT USE FOR PCB LAYOUT

patented	<b>A3H</b>	Scale	UNLESS OTHERWISE SPECIFIED: DIMENSIONS ARE IN MILLIMETERS GENERAL TOLERANCES ISO 2768m
		7:1	
		REV	modif:
		0	
		NAME	DATE
	DRAWN	16.02.2011	
	REVD	-	
	CHKD	-	
	APPVD	16.02.2011	

ELW9999991-03MI55L	<b>Remark:</b> LGA Twist Lock socket, Chip 3x3 Retention frame code MI = TwistLock + RF opentop
"Order code"	<b>ELW3</b>
"Description"	Elastomer Socket for M-QFN 3x3mm