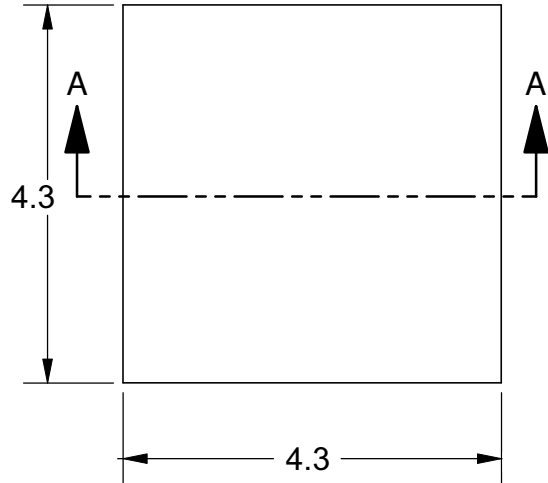
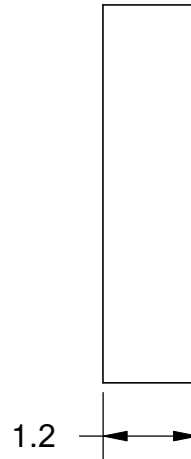


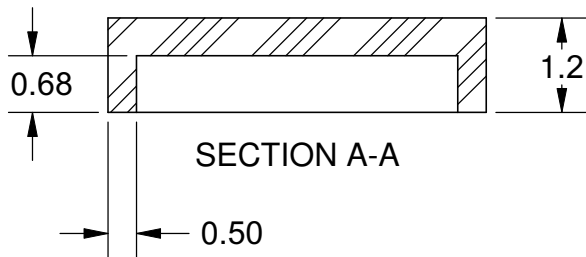
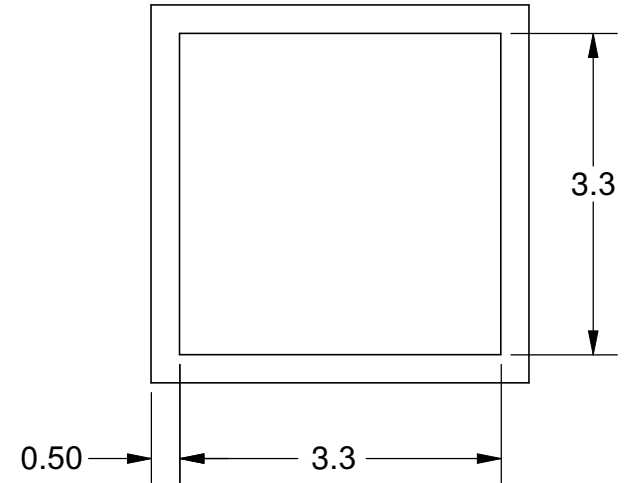
TOP VIEW



SIDE VIEW


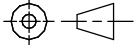


BOTTOM VIEW



Notes: (Unless Otherwise Specified).

- 1) MATERIAL:
 - A) LCP - LIQUID CRYSTAL POLYMER.
 - B) PREFORM: NONE.
- 2) LID ATTACH:
 - A) REMOVABLE: USE KAPTON TAPE OF EQUIVALENT.
 - B) PERMANENT: USE EPOXY PER CUSTOMER CHOICE.
- 3) STORAGE LIFE: NO LIMIT @ 25 °C.
- 4) COLOR: BLACK.
- 5) DIMENSIONS: mm.

TOLERANCE UNLESS NOTED		APPROVALS	DATE	 Mirror Semiconductor™							
X.XX	+/- 0.13	DRAWN J. Hines	7/31/2011					TITLE 4.3 X 4.3 mm DOME LID L-CAP4.3T1.2-BLACK			
X.XXX	+/- 0.06										
X.XXXX	+/- 0.03										
ANGLES +/- 0.5° ALL DIMENSIONS IN <input checked="" type="checkbox"/> INCHES <input type="checkbox"/> MILLIMETERS		ENG		SCALE	SIZE	DRAWING NO.	REV				
THIRD ANGLE PROJECTION 		MFG		12.5:1	A	243480	A				
		QA		DO NOT SCALE DRAWING							
		CUST		SHEET 1 OF 1							
		REVISED									