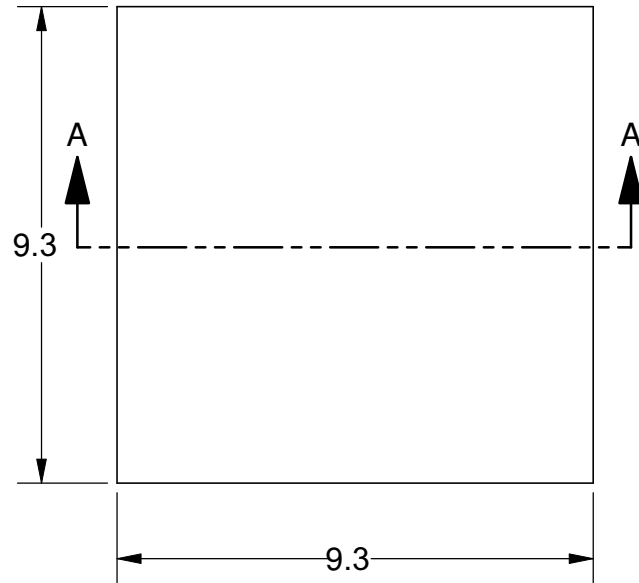
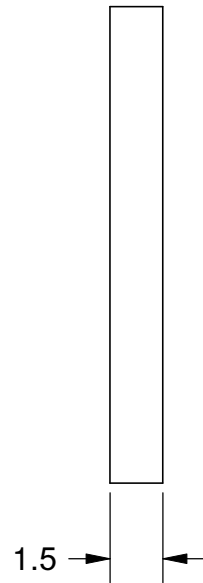


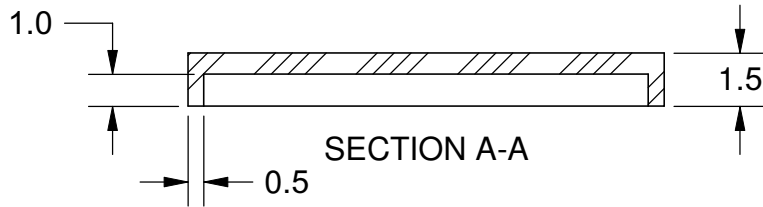
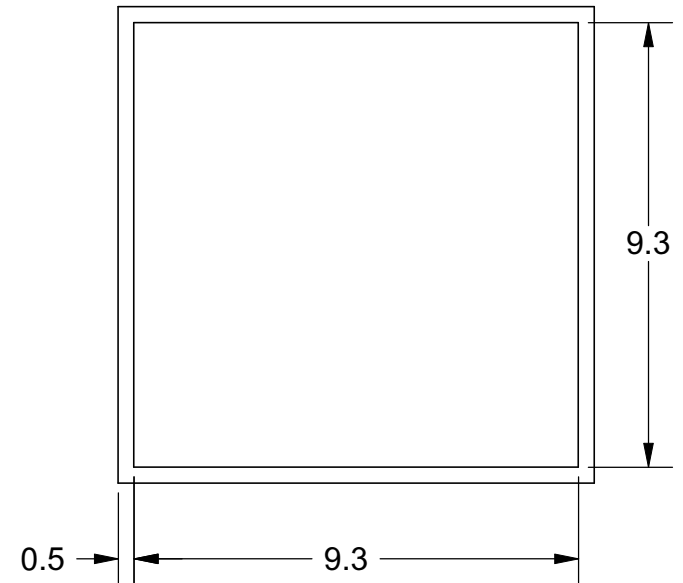
TOP VIEW



SIDE VIEW




BOTTOM VIEW



Notes: (Unless Otherwise Specified).

- 1) MATERIAL:
 - A) LCP - LIQUID CRYSTAL POLYMER.
 - B) PREFORM: NONE.
- 2) LID ATTACH:
 - A) REMOVABLE: USE KAPTON TAPE OF EQUIVALENT.
 - B) PERMANENT: USE EPOXY PER CUSTOMER CHOICE.
- 3) STORAGE LIFE: NO LIMIT @ 25 °C.
- 4) COLOR: BLACK.
- 5) DIMENSIONS: mm.

TOLERANCE UNLESS NOTED		APPROVALS		DATE		 Mirror Semiconductor™							
X.XX	+/- 0.13	DRAWN J. Hines		7/31/2010						TITLE 9.3 X9.3 mm DOME LID L-CAP9.3T1.5-BLACK			
X.XXX	+/- 0.06												
X.XXXX	+/- 0.03	ENG				SCALE 7:1 SIZE A DRAWING NO. 292480 REV A							
ANGLES	+/- 0.5°	MFG											
ALL DIMENSIONS IN		QA				DO NOT SCALE DRAWING SHEET 1 OF 1							
<input checked="" type="checkbox"/> INCHES <input type="checkbox"/> MILLIMETERS		CUST											
THIRD ANGLE PROJECTION		REVISED											