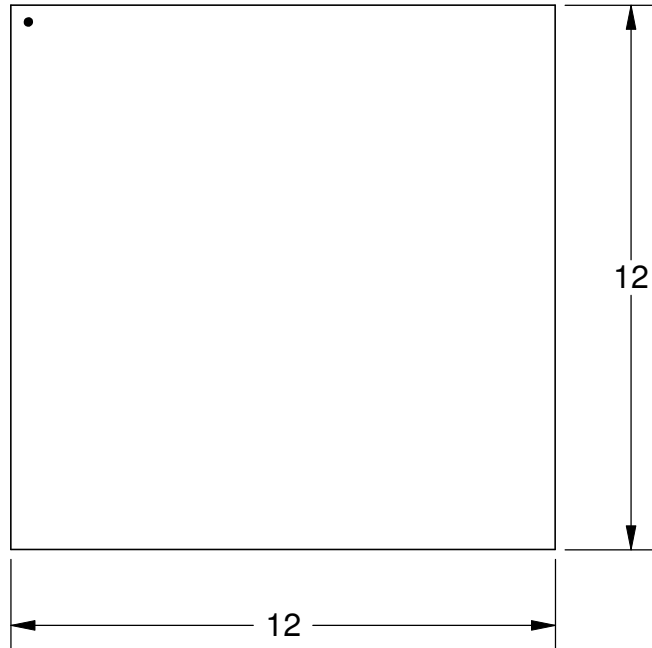
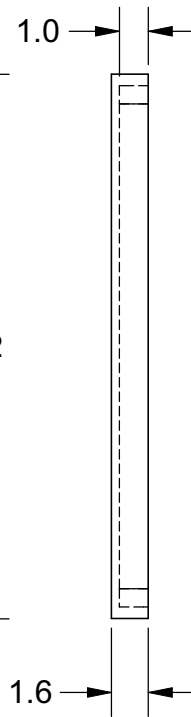


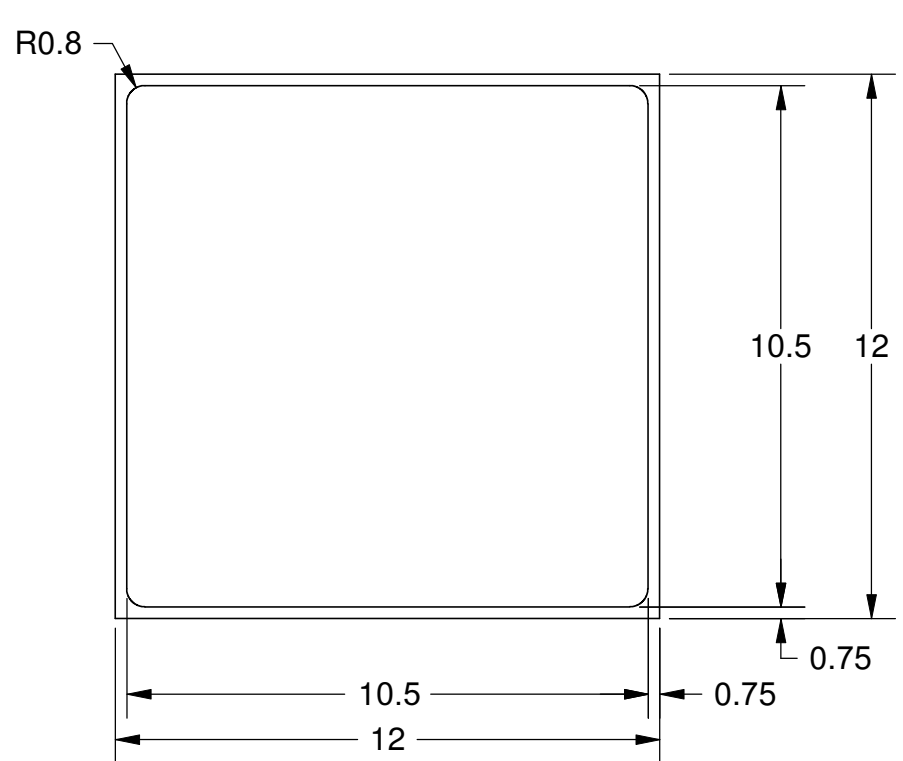
TOP VIEW  
CLOSED SIDE



SIDE VIEW



BOTTOM VIEW  
OPEN SIDE



Notes: (Unless Otherwise Specified).

- 1) MATERIAL:
  - A) LID: ALUMINUM
  - B) PREFORM: NONE.
- 2) LID ATTACH:
  - A) REMOVABLE: USE KAPTON TAPE OR EQUIVALENT.
  - B) PERMANENT: USE EPOXY PER CUSTOMER CHOICE.
- 3) STORAGE LIFE: NO LIMIT @ 25 °C.
- 4) DIMENSIONS IN mm.

TOLERANCE UNLESS NOTED		APPROVALS	DATE	<b>TopLine</b> <sup>®</sup>			
X.X	+/- 0.05						
X.XX	+/- 0.01	DRAWN J. Hines	2/12/2011	TITLE Z-CAP 12X12mm DOME LID			
X.XXX	+/- 0.005						
ANGLES +/- 0.5°		ENG		SCALE 6:1    SIZE A    DRAWING NO. 212020    REV A			
ALL DIMENSIONS IN		MFG					
<input type="checkbox"/> INCHES	<input checked="" type="checkbox"/> MILLIMETERS	QA		DO NOT SCALE DRAWING    SHEET 1 OF 1			
THIRD ANGLE PROJECTION		CUST					
		REVISED					